

# Proment – project management

*Proment a world leader in the manufacturing of tooling and equipment for mass production automated facilities.*

*Over 40 years of experience and expertise in the production of tools, dies, and a variety of heavy duty 4-160 tons compacting presses, with emphasis on the Powder Metallurgy (PM) industry.*

*Our experience allows us to develop, design and **quickly** bring to market, the most innovative and **cost effective** state of the art equipment.*



© Proment – project management 2008. All rights reserved

***We take your manufacturing challenge and turn it to a working solution.***

Main production plant: 41 Lohamay Hgetaot street  
Nahariyya 22447 **ISRAEL** Phone: +972 4 9000 411  
Cell: +972 454 447 550 e-mail: [proment@proment.net](mailto:proment@proment.net)

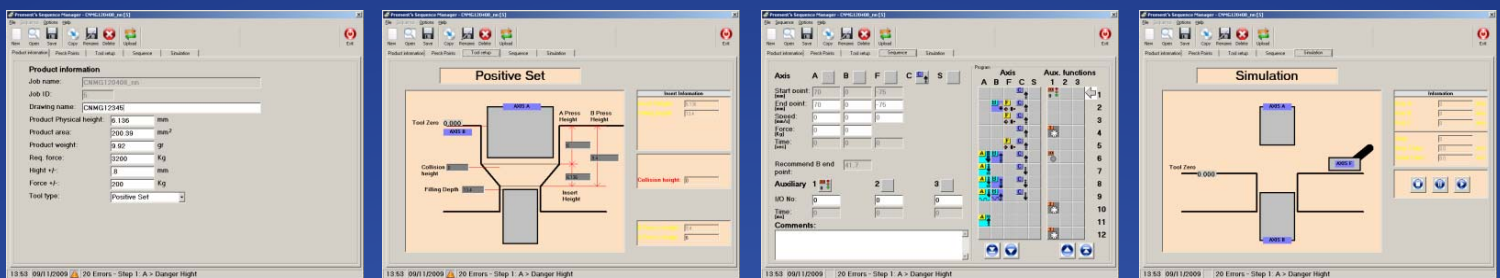
North American Division: 5799 Yonge street. Suite 1107  
Toronto, Ontario M2M 3V3 **CANADA**  
Phone: +1 905 597 6368, e-mail: [info@pro-ment.com](mailto:info@pro-ment.com)

Our new customized S700 - Powder Compacting Hydraulic Press (PHP) is designed and assembled to meet and exceed most of performance parameters & requirements set forth by the customers and market leading companies:

The new Proment PHP is the world only system of kind possessing so many features and unique advantages:

## Special Features:

1) **Flexible Programmer™** - Fully integrated software programs, **PromentPro II®** and **PromentPro SM II®**, enable the user to program any desired process parameters recipes and run verification simulation testing. This programmer is installed on a remote computer that could be placed in secured location. Programming modifications can be done on line and easily backed up on the remote computer.

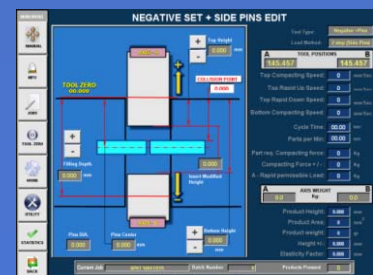
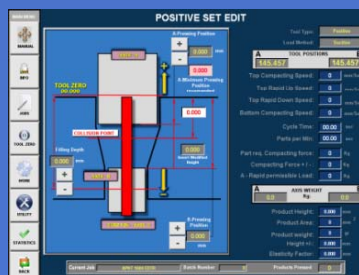
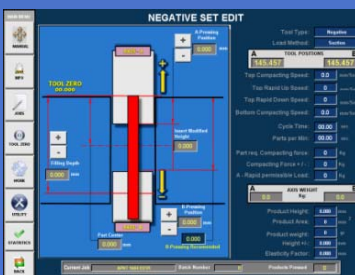


2) **Robot** - Proment PHP could be integrated and supplied with any Robot. Our system uses a dry contact as the communication channel between the PHP and the selected Robot. The user can utilize the commands in our Flexible Programmer™ to integrate and time control the operation of the Robot, or use the Robot as the cycle commencement indicator.

3) **Finished product Automated Stocker** - This option feature, is fully integrated with the Robot to make our PHP most productive high quality machine worldwide.

## Advantages:

- Life Cycle Cost - Ease of maintenance and state of the art human engineering.
- Shop floor space - Compactness and fully integrated system design
- Energy - Most Sophisticated hydraulic pump and circuit requires only 1/3 power.
- Noise - Lower noise emission due to less required power and strategic insulation.
- Downtime - Semi-Automated Powder re-supply without process interruption.
- Three modes of operation - Tool types in One smart adapter and software.



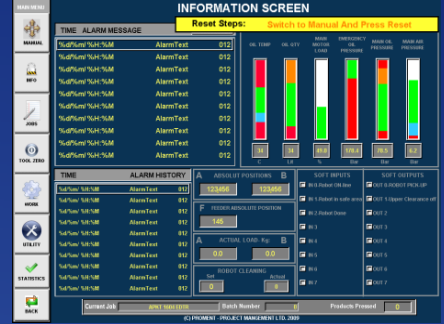


# Proment - project management

Our new customized 700 Series - Powder Compacting Hydraulic Press (PHP) features:

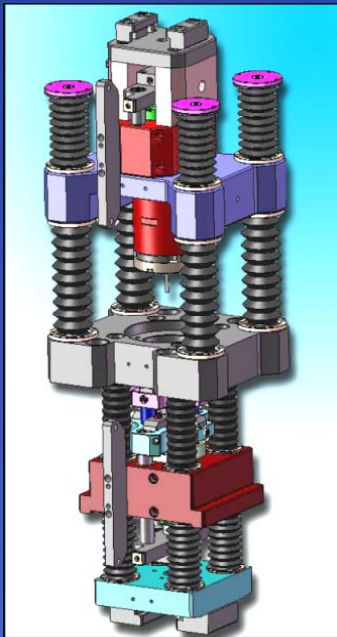
## Breakthrough smart innovations:

- Communications and Remote Control
- Flexible Programming
- Self Diagnostic system
- Internal No Collision™ software
- Good or Bad Part decision
- Full Flexible Robot / No Robot Interface
- Powder and product estimation
- 7 Human Machine Interactive screens



## Unique design achievements:

- Any adapter could fit
- Withdrawal or Ejection methods
- Double powder hopper and lifter
- Any powder can be used
- Category 4 Safety rating
- Position accuracy  $\pm 0.002$  mm
- Repeating accuracy  $\pm 0.002$  mm
- Three pressing methodologies:
  1. Position control
  2. Force control
  3. Force increase to position



## Special capabilities:

- Over 40 years of machine building experience.
- Electric - electronics in-house expertise.
- European grade finish product
- In house production testing and assembly

## Inventions:

- Five USPTO & EPO patents are pending in hardware areas.
- Two USCO Copyright Registrations in software areas.

***We take your manufacturing challenge and turn it to a working solution.***

# Technical Specifications

<b>Axes 2- Die side</b>	<b>Measurement</b>	<b>Units</b>
Pressing Force	120	KN
Piston Stroke	100	mm
Piston Diameter	100	mm
Rod Diameter	70	mm
Setting up speed	<2	mm/sec
Repeating Accuracy	+/- 0.0025	mm
Repeating Accuracy using the press with	+/- 0.0015	mm
Piston Speed range	1-200	mm/sec

<b>Axes 3 - Lower Core Rod</b>	<b>Measurement</b>	<b>Units</b>
Pressing Force	6.28	KN
Piston Stroke	50	mm
Piston Diameter	100	mm
Rod Diameter	30	mm
Setting up speed	<10	mm/sec
Repeating Accuracy	+/- 0.01	mm
Piston Speed range	100	mm/sec

<b>Axes 4 - Side Core part of the adapter</b>	<b>Measurement</b>	<b>Units</b>
Pressing Force	12	KN
Piston Stroke	30	mm
Piston Diameter	35	mm
Rod Diameter	20	mm
Setting up speed	<10	mm/sec
Repeating Accuracy	+/- 0.01	mm
Piston Speed range	5-100	mm/sec

<b>Axes 5 - Feeding device with resting</b>	<b>Measurement</b>	<b>Units</b>
Horizontal stroke	250	mm
Volume of feeding Hopper	5	Lit
Feeding Force	600	N
Jacking Force (pneumatic)	400	N



Proment - Projects management Ltd



<b>Overall Speeds</b>	<b>Measurement</b>	<b>Units</b>
Upper punch Rapid speed	200	mm/sec
Upper punch Pressing Speed	<2	mm/sec
Lower die Speed	200	mm/sec
Core Rod speed	100	mm/sec
Filling Shoe speed	500	mm/sec
Number of strokes (at 10mm filling depth)	12	S/min

<b>Hydraulic system</b>	<b>Measurement</b>	<b>Units</b>
Tank Volume	200	Lit
Operating Pressure (Max / Min)	160/15	Bar
Electric Motor	15	HP
Oil accumulator (for safty retract as well)	10	Lit

<b>Water thermalizing system (heat exchange unit)</b>	<b>Measurement</b>	<b>Units</b>
Temperature of in going cooling water	10-20	C
Temperature of out going cooling water	18-30	C
Flow rate	15-20	Lit/min
Connection Inlet / outlet	1/2" / 1/2"	In

<b>Pneumatic system with Consol</b>	<b>Measurement</b>	<b>Units</b>
Min. Pressure	6	Bar
Air consumption	10	Lit/Min
Air accumulator (for safty of the filling shoe)	10	Lit

<b>Main control Board</b>	<b>Measurement</b>	<b>Units</b>
Operating Voltage (3 Ph) / Frequency	380 / 50	V / Hz
Max. Operation Current	25	Amp
Normal Operation Current	10	Amp
Control Voltage	24	V (DC)
Ambient Temp	15-30	C
Overall Protection Class	4	

<b>Operating controllers</b>	<b>Measurement</b>	<b>Units</b>
Solid stat Hard drive	8	GB Flash